

# BOYNE VALLEY

## DIRECTORY FOR BUSINESS EVENTS



**BOYNE  
VALLEY**

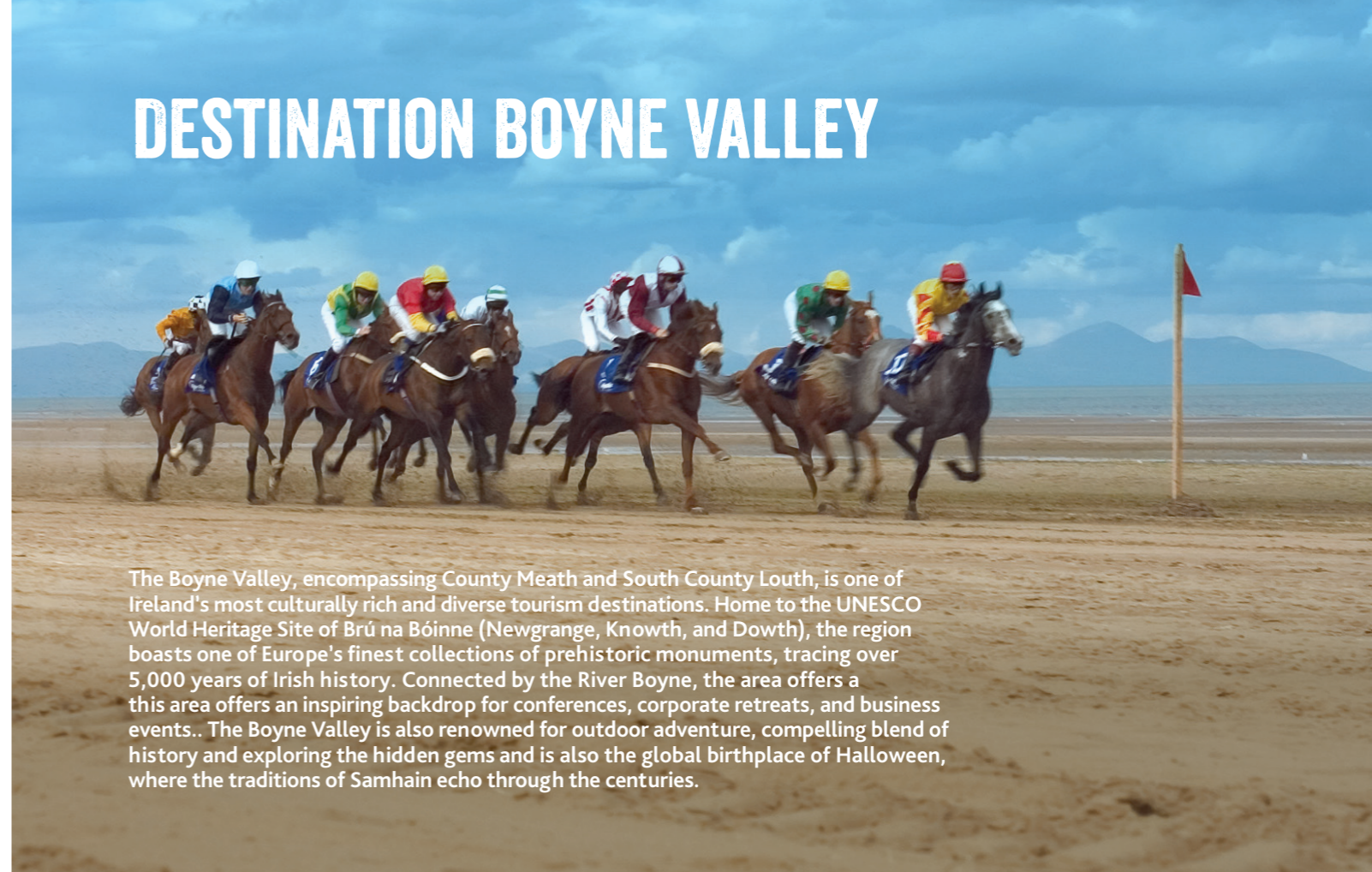
Birthplace of Ireland's Ancient East

# TABLE OF CONTENTS

Destination Boyne Valley	1
Travel Times to Ireland	2
Boyne Valley at a Glance	4
Getting Around the Boyne Valley	6
Transport Options	7
Venue Locations Map	8
Ardboyne Hotel	10
Bellinter House Hotel	11
Castle Arch Hotel	12
CityNorth Hotel	13
Conyngham Arms Hotel	14
Darnley Lodge Hotel	15
Dunboyne Castle Hotel	16
The Glenside Hotel	17
The Johnstown Estate	18
Hamlet Court Hotel	19
Headfort Arms Hotel	20
Knightsbrook Hotel	21
Newgrange Hotel	22
Scholars Townhouse Hotel	23
The Station House Hotel	24
Trim Castle Hotel	25
Boyne House Slane	26
Boyne View House	27
Killeen Castle	28
Loughcrew Estate	29
Slane Castle	30
Tankardstown House	31
Emerald Park	32
Fairyhouse Racecourse	33
Navan Racecourse	34
Other Accommodation	36
Extend Your Stay	40



# DESTINATION BOYNE VALLEY



The Boyne Valley, encompassing County Meath and South County Louth, is one of Ireland's most culturally rich and diverse tourism destinations. Home to the UNESCO World Heritage Site of Brú na Bóinne (Newgrange, Knowth, and Dowth), the region boasts one of Europe's finest collections of prehistoric monuments, tracing over 5,000 years of Irish history. Connected by the River Boyne, the area offers a this area offers an inspiring backdrop for conferences, corporate retreats, and business events.. The Boyne Valley is also renowned for outdoor adventure, compelling blend of history and exploring the hidden gems and is also the global birthplace of Halloween, where the traditions of Samhain echo through the centuries.

## BIRTHPLACE OF IRELAND'S ANCIENT EAST



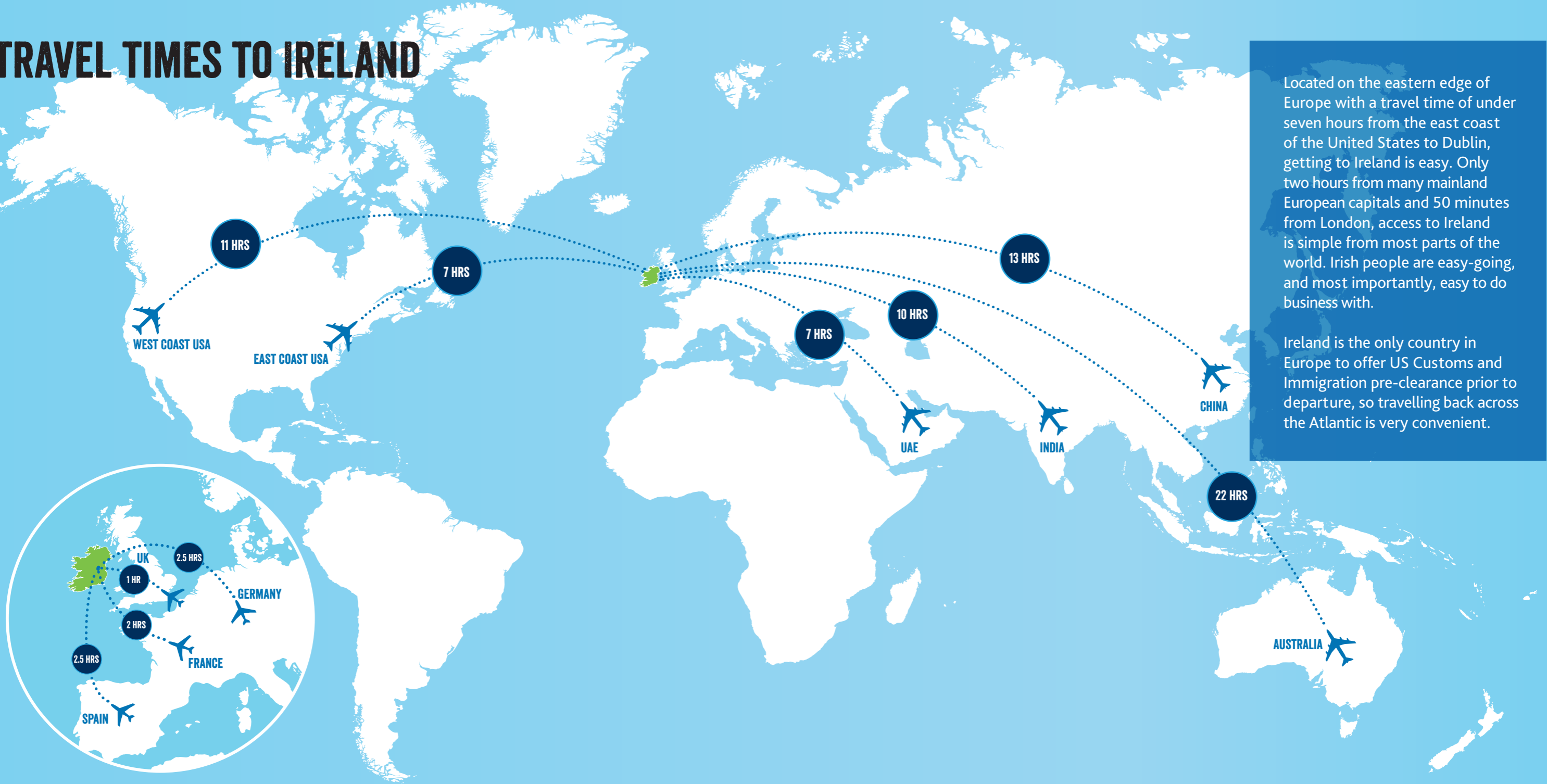
## A RICH CULTURAL EXPERIENCE



## EXCEPTIONAL ACCOMMODATION



# TRAVEL TIMES TO IRELAND



Located on the eastern edge of Europe with a travel time of under seven hours from the east coast of the United States to Dublin, getting to Ireland is easy. Only two hours from many mainland European capitals and 50 minutes from London, access to Ireland is simple from most parts of the world. Irish people are easy-going, and most importantly, easy to do business with.

Ireland is the only country in Europe to offer US Customs and Immigration pre-clearance prior to departure, so travelling back across the Atlantic is very convenient.

# BOYNE VALLEY AT A GLANCE

The Boyne Valley offers a world class domestic and international Meetings, Incentive, Conference & Events destination. It offers unique incentive experiences and strong event programmes that can complement your corporate programme.

## ACCESS



Only **30** minutes from Dublin International Airport



Served by **4** major motorways – M1, M2, M3 and M4, the Boyne Valley offers great connectivity and easy access from Dublin, Belfast and Shannon

## MEETINGS AND EVENTS



Largest single plenary capacity **1,100**  
Largest single banquet capacity **710\***



\* The Johnstown Estate

## DID YOU KNOW

The Boyne Valley is home to the largest concentration of megalithic carved stone art in Western Europe, at the Loughcrew Cairns and Brú na Bóinne (Newgrange and Knowth).

Tlachtga (the Hill of Ward), is where Halloween as we know it began with the festival of Samhain, many moons ago.

## TEAM BUILDING ACTIVITIES

Archery  
Biking  
Golf  
Hiking  
Horse Racing  
Karting  
Kayaking  
Rafting



Activity Days  
Wellness Days  
Yoga  
Corporate Retreats  
Tailored Events



Coach parking can be accommodated at all major heritage attractions, conference venues and hotels



## BENEFITS OF THE BOYNE VALLEY



Exceptional facilities for conferences, product launches, and incentive  
Skilled workforce  
Multi-lingual employees  
High speed wifi network  
State-of-the-art tech facilities

# GETTING AROUND THE BOYNE VALLEY



## CAR

Travelling to and throughout the Boyne Valley has never been easier. Just 20 minutes north of Dublin International Airport in the North East of Ireland, the Boyne Valley has a unique location at the hub of four major motorways – the M1, M2, M3 and M4. Convenient to ferry ports in Dublin and Belfast. EV users in the Boyne Valley will benefit from a decision by Meath County Council and Louth County Council to make EV parking available at a number of locations in the county. Check the [interactive map](#) of charge point locations in Meath and Louth.



## BUS

A number of bus routes operate through Meath and Louth, linking the main towns such as the 109 (Dublin to Cavan via Navan and Kells), the 111 (Dublin to Athboy via Trim) and the 190 (Trim to Drogheda via Navan and Slane). Bus Eireann operates a bus service (Route 163) between the Brú na Bóinne Visitor Centre and Drogheda, via the Battle of the Boyne site at Oldbridge House. See [buseireann.ie](#) for information..

Local Link operates a number of bus routes in Meath (including Ashbourne, Longwood, Trim, Navan and Athboy), Louth (including Drogheda, Clogherhead, Annagassassan and Monasterboice) and Fingal. See [website](#) for details.



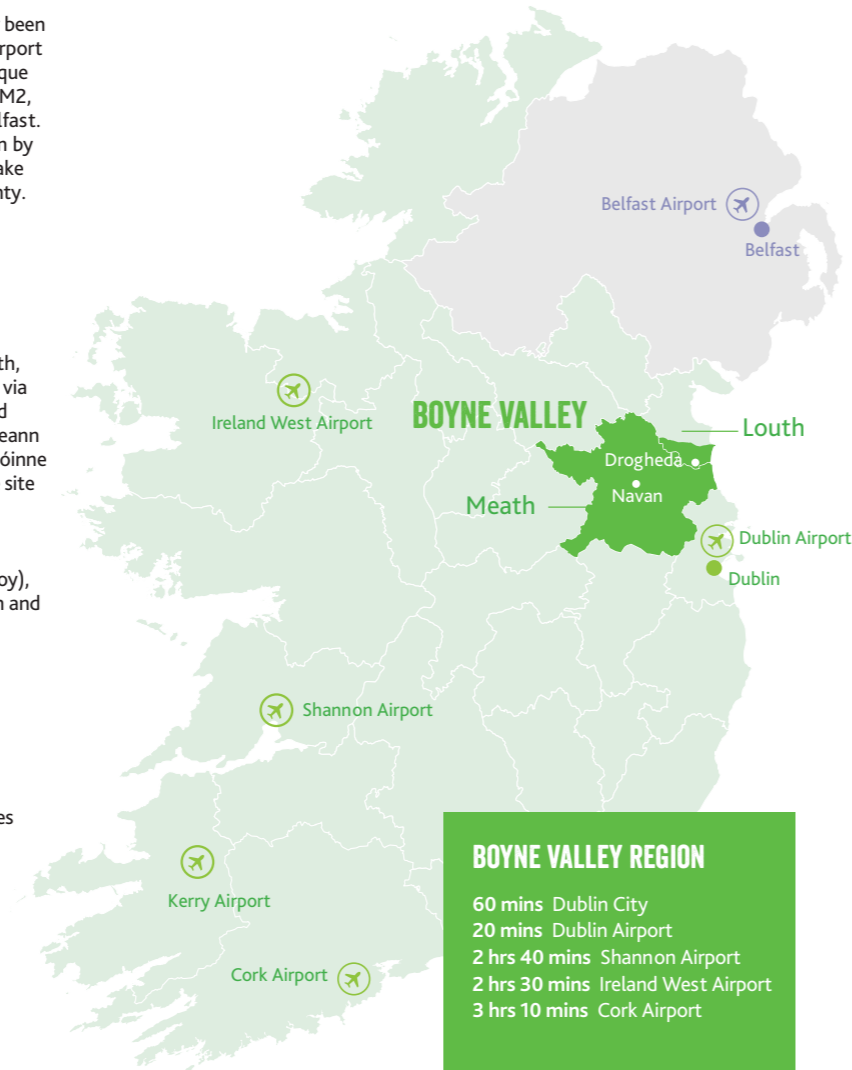
## RAIL

The Boyne Valley is linked by rail via the Dublin-Belfast line through Drogheda (and Laytown and Gormanston), the M3 Parkway-Dublin line (via Dunboyne) and in the south at Enfield (on the Dublin to Sligo line). For timetables and fares see [Irishrail.ie](#)



## BIKE

One of the best ways to uncover the beauty of the Boyne Valley's terrains and greenways is on two wheels. [Feel Good Bicycles](#) offers an incredible selection of bikes for hire, including e-bikes, so you can explore the region at your own pace. Pick up your ride from the Feel Good Bicycles shop in Park Beo Wilkinstown on the Greenway or in the Virginia store. Alternatively, if you're staying at a local hotel or B&B, you can enjoy the convenience of bikes delivered to your accommodation.



### BOYNE VALLEY REGION

60 mins Dublin City  
 20 mins Dublin Airport  
 2 hrs 40 mins Shannon Airport  
 2 hrs 30 mins Ireland West Airport  
 3 hrs 10 mins Cork Airport

# TRANSPORT OPTIONS

## FEEL GOOD BIKES

Feel Good Bicycles has the perfect bike for everyone. Choose from: standard bikes, e-bikes, kids' bikes, seats, and trailers, high-quality mountain bikes and e-mountain bikes (Virginia Collection), carbon fibre racer/road bikes (Virginia Collection). [feelgoodbicycles.ie](#)

Unit 2, Virginia Shopping Centre, Ballyjamesduff Rd, Rahardrum, Virginia, Co. Cavan  
 Park Beo, Wilkinstown, Co. Meath, C15 EY0P  
 Tel +353 49 854 7886E  
 E [hello@feelgoodbicycles.ie](mailto:hello@feelgoodbicycles.ie)

## IRELAND'S CHAUFFEUR TOURS

Small bespoke chauffeur tours by a professional licensed guide in a luxurious 6-seater Mercedes. Day tours of the Boyne Valley and tours around Ireland available. [chauffertours.ie](#)

Rathmóre, Athboy, Co. Meath  
 Tel +353 (0) 87 672 2193

## TRANSFER ME

Transfer Me provides a luxury chauffeur service for airport transfers, to all major events including sporting events, private events, meetings, conferences and music events. They also cater or clients who want to do tours of Ireland and see some of the country's historical sites. [transferme.ie](#)

Kentstown, Co. Meath  
 Tel +353 (0) 85 712 2732  
 E [info@transferme.ie](mailto:info@transferme.ie)

## DONIE QUINN TAXIS

Donie Quinns are a professional family run business who have been running since 1989, who offer many types of services including golf trips, airport transfers and wheelchair accessible cars. Coach & bus hire are also available. [doniequinntaxis.ie](#)

Trim, Co. Meath  
 Tel +353 (0) 46 943 6009  
 E [annie@doniequinntaxis.ie](mailto:annie@doniequinntaxis.ie)

## CAROLAN COACH HIRE

Carolan Coaches is a family run superior executive Irish coach company who provide executive style and economy coach tours along with coach hire for any business trips. [carolancoachhire.ie](#)

Nobber, Co. Meath  
 Tel +353 (0) 46 905 2336  
 E [info@carolancoachhire.ie](mailto:info@carolancoachhire.ie)

## MURRAY AND SON COACHES

Murray & Son Coaches provide coach hire services of the highest standard and represent excellent value for money. They offer a wide range of vehicles from minibuses to luxury executive coaches.

Duleek, Co. Meath  
 Tel +353 (0) 87 239 0222  
 E [murrayscoachhire@gmail.com](mailto:murrayscoachhire@gmail.com)

## USEFUL TRAVEL LINKS

Airlines	<a href="#">aerlingus.com</a> , <a href="#">ryanair.com</a>
Ferries	<a href="#">irishferries.com</a> , <a href="#">stenaline.ie</a> <a href="#">poirishsea.com</a> , <a href="#">poferries.com</a>
Bus	<a href="#">buseireann.ie</a>
Dublin Airport	<a href="#">dublinairport.com</a>
Irish Rail	<a href="#">irishrail.ie</a>
TFI Journey Planner	<a href="#">transportforireland.ie</a>

# VENUE LOCATIONS



## HOTELS

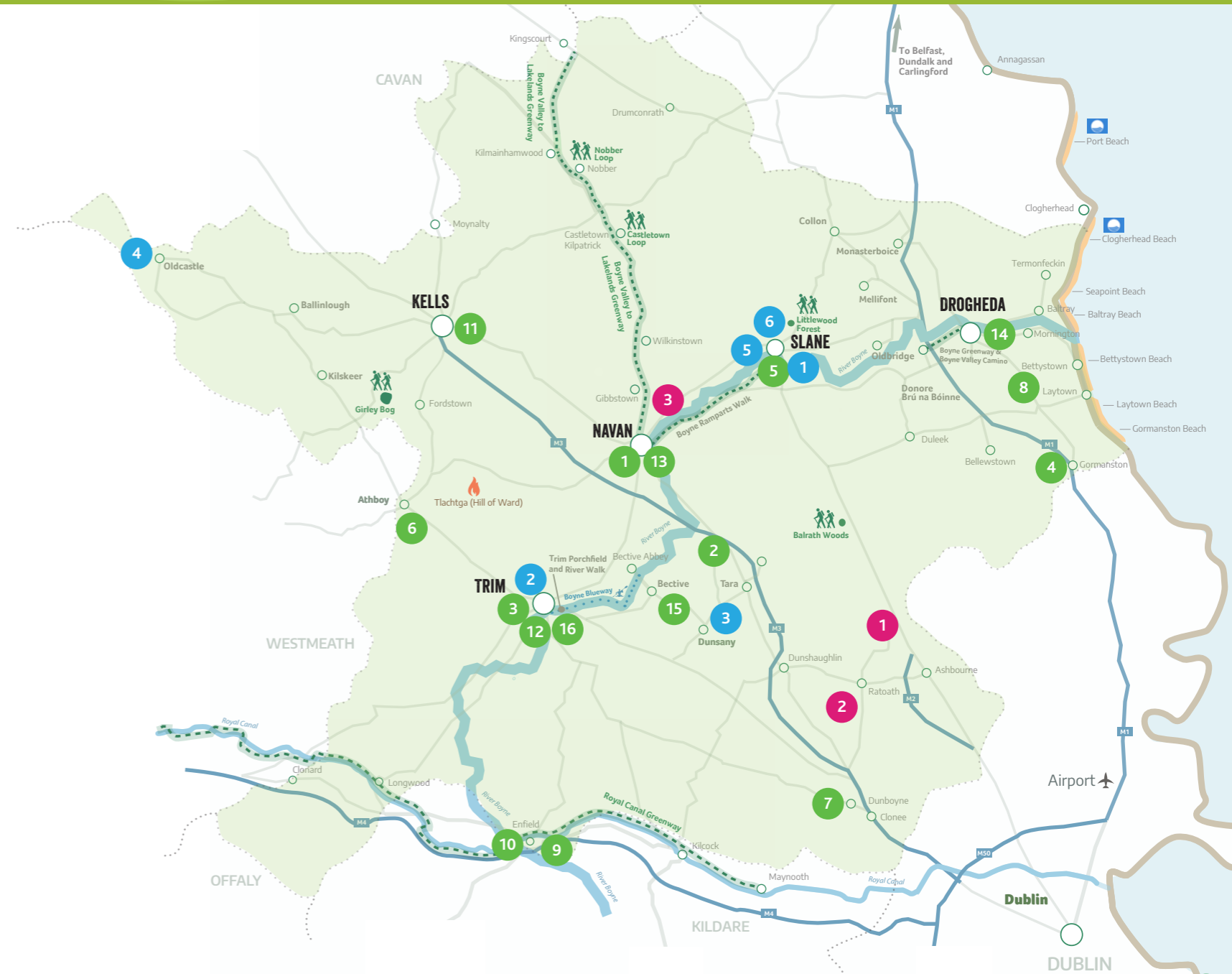
- 1 Ardboyne Hotel
- 2 Bellinter House Hotel
- 3 Castle Arch Hotel
- 4 CityNorth Hotel
- 5 Conyngham Arms Hotel
- 6 Darnley Lodge Hotel
- 7 Dunboyne Castle Hotel
- 8 The Glenside Hotel
- 9 The Johnstown Estate
- 10 Hamlet Court Hotel
- 11 Headfort Arms Hotel
- 12 Knightsbrook Hotel
- 13 Newgrange Hotel
- 14 Scholars Hotel
- 15 The Station House Hotel
- 16 Trim Castle Hotel

## SPECIALIST ACCOMMODATION

- 1 Boyne House Slane
- 2 Boyne View House
- 3 Killeen Castle
- 4 Loughcrew Estate
- 5 Slane Castle
- 6 Tankardstown House

## ALTERNATIVE VENUES

- 1 Emerald Park
- 2 Fairyhouse Racecourse
- 3 Navan Racecourse



# ARDBOYNE HOTEL

Venue & Accommodation

★★★★

## Ardboyne Hotel

Dublin Road  
Navan  
Co Meath  
C15 C9YA

## Ian Hunt & Ashley Brennan

+353 46 903 3277  
ihunt@cusackhotels.com  
abrennan@cusackhotels.com  
www.ardboynehotel.com



- 29 bedrooms
- 27 bedrooms for twin occupancy
- Restaurant capacity 90
- Private dining capacity 300
- Bar capacity 100
- 52km from Dublin Airport (approx 40 mins by car)
- 52km from Dublin city (approx 55 mins by car)
- Accessible by public transport

Map Ref  
1

The newly renovated 4-Star Ardboyne Hotel, located just minutes from Navan town centre, seamlessly blends contemporary design with classic comfort, offering an exceptional experience for business guests. Following a recent refurbishment, the hotel features stylish new interiors, upgraded guest rooms, and enhanced conference and event spaces equipped with the latest technology. Ideal for corporate meetings, seminars, and functions, the Ardboyne provides high-speed Wi-Fi, ample free parking, and dedicated event support. Guests can enjoy refined dining options showcasing locally sourced produce in a relaxed, modern setting. Conveniently situated near the M3 motorway, the hotel offers easy access to Dublin and the wider Boyne Valley region. The newly transformed Ardboyne Hotel delivers a sophisticated, professional environment designed to make every stay or event memorable and productive.

Meeting Space	U Shape	Theatre	Classroom	Boardroom	Banquet	Reception	Cabaret	Length x Width	Ceiling Height	Area Sqm
Boyne Suite	N/A	450	200	50	300	500	N/A	24.3 x 14.5	4.24	352.4
Tara Suite	N/A	100	150	35	70	100	N/A	9.7 x 7.3	3.21	70.8
Taylor Suite	N/A	45	20	20	40	50	N/A	7.3 x 5.5	2.6	40.2
Tower Room	N/A	N/A	N/A	12	N/A	N/A	N/A	5.5 x 5.5	2.72	30.3
Residents Lounge	N/A	20	N/A	12	N/A	30	N/A	4.8 x 4.2	2.6	40.2
Bective Suite	c	35	20	20	35	30	N/A	7.3 x 5.5	2.6	40.2

# BELLINTER HOUSE HOTEL

Venue & Accommodation

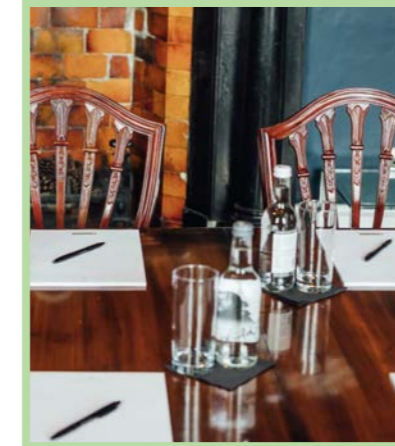
★★★★

## Bellinter House Hotel

Dublin Road  
Navan  
Co Meath  
C15 C9YA

## Ciara Dowling

+353 46 903 0900  
ciara@bellinterhouse.com  
www.bellinterhouse.com



- 51 bedrooms
- 23 bedrooms for twin occupancy
- Restaurant capacity 55
- Private dining capacity 180
- Bar capacity 30
- 49km from Dublin Airport (approx 35 mins by car)
- 49km from Dublin city (approx 54 mins by car)
- Accessible by public transport

Map Ref  
2

A magnificent 18th century Georgian house just minutes from the M3 and under 30 minutes from Dublin City Centre and Dublin Airport. Enjoy exceptional dining, full spa services, unique experiences, and our outdoor thermal pool. At Bellinter House, every moment — from Preston's Restaurant to pure relaxation — becomes unforgettable.

Meeting Space	U Shape	Theatre	Classroom	Boardroom	Banquet	Reception	Cabaret	Length x Width	Ceiling Height	Area Sqm
Garden Suite	30	200	100	36	160	N/A	72	15 x 10.5	4.24	158.5
Nunnery	N/A	36	40	36	N/A	N/A	N/A	12 x 6	3.21	72
Library	N/A	20	N/A	10	N/A	N/A	14	5.9 x 4.2	2.6	24.78

# CASTLE ARCH HOTEL

Venue & Accommodation  
★★★

## Castle Arch Hotel

Summerhill Road  
Trim  
Co Meath  
C15 WD92

## Ian Hunt & Ashley Brennan

+353 46 903 3277  
ihunt@cusackhotels.com  
abrennan@cusackhotels.com  
www.castlearchhotel.com



- 21 bedrooms
- 16 bedrooms for twin occupancy
- Restaurant capacity 100
- Private dining capacity 200
- Bar capacity 100
- 50km from Dublin Airport (approx 41 mins by car)
- 50km from Dublin city (approx 60 mins by car)
- Accessible by public transport

Map Ref  
3

The Castle Arch Hotel, nestled in the historic town of Trim, Co. Meath, is a stylish boutique hotel offering a perfect blend of character, comfort, and contemporary business facilities. Ideally located just 35 minutes from Dublin, it provides a convenient setting for corporate meetings, training sessions, and networking events. The hotel features versatile conference and banqueting suites equipped with modern AV technology, along with comfortable accommodation and complimentary high-speed Wi-Fi. Guests can also enjoy exceptional dining in the award-winning restaurant and bar, known for its warm hospitality and locally inspired menus. With its central location, professional service, and relaxed atmosphere, the Castle Arch Hotel delivers a superior experience for business travelers and event organisers alike.

Meeting Space	U Shape	Theatre	Classroom	Boardroom	Banquet	Reception	Cabaret	Length x Width	Ceiling Height	Area Sqm
King John Suite	N/A	30	32	26	60	N/A	N/A	N/A	N/A	58
Green Room	N/A	30	20	20	30	N/A	N/A	N/A	N/A	53
Emmet Suite	N/A	230	80	50	200	N/A	N/A	N/A	N/A	392
Arch Suite 1	N/A	60	40	30	60	N/A	N/A	N/A	N/A	165
Arch Suite 2	N/A	60	40	30	60	N/A	N/A	N/A	N/A	165
Arch Suite 1&2	N/A	120	60	40	120	N/A	N/A	N/A	N/A	330

# CITYNORTH HOTEL

Venue & Accommodation  
★★★★

## CityNorth Hotel

Gormanston  
Co Meath  
K32 W562

## Suzanne Mulvey

+353 1 690 6666  
suzanne@citynorthhotel.com  
www.citynorthhotel.com



- 128 bedrooms
- 121 bedrooms for twin occupancy
- Restaurant capacity 150
- Private dining capacity 380
- Bar capacity 500
- 27km from Dublin Airport (approx 21 mins by car)
- 39km from Dublin city (approx 47 mins by car)
- Accessible by public transport

Map Ref  
4

CityNorth Hotel is an award winning 4-star hotel, located 15 minutes from Dublin Airport, on the M1 motorway within the historic Boyne Valley region of Ireland's Ancient East. It is a convenient meetings hub situated along the Dublin Belfast Economic Corridor. Boasting one of Ireland's finest conference centres, CityNorth Hotel is surrounded by golf courses and beaches, and is within easy reach of Dublin and Belfast cities. Matthews Coaches also operate a pick up & drop off bus service at CityNorth Hotel, servicing Dublin City Centre, and large events in Croke Park, 3 Arena, Aviva and other venues.

Meeting Space	U Shape	Theatre	Classroom	Boardroom	Banquet	Reception	Cabaret	Length x Width	Ceiling Height	Area Sqm
Somerville Suite	N/A	700	220	N/A	380	N/A	225	N/A	N/A	540
Whitewood Suite 2&3	30	120	60	30	N/A	N/A	60	N/A	N/A	140
Dunsany Suite	18	50	20	20	100	N/A	60	N/A	N/A	50
Whitewood Suite 1	16	40	18	15	30	N/A	24	N/A	N/A	46.5
Newgrange	8	30	18	10	30	N/A	18	N/A	N/A	49
Bellview 1	14	40	18	14	30	N/A	30	N/A	N/A	36.68
Bellview 2	14	40	18	14	30	N/A	30	N/A	N/A	36.68
Blackcastle 1	N/A	18	6	8	N/A	N/A	N/A	N/A	N/A	26.77
Blackcastle 2	14	30	18	14	30	N/A	15	N/A	N/A	36.68
Blackcastle 3	14	30	18	14	30	N/A	15	N/A	N/A	36.68
Marketing Suite	N/A	N/A	N/A	6	N/A	N/A	N/A	N/A	N/A	26.77

# CONYNGHAM ARMS HOTEL

Venue & Accommodation

★★★★

## Conyngham Arms Hotel Tracie Ward

Main Street  
Slane  
Co Meath  
C15 HN52

+353 41 988 4444  
salesandevents@conynghamarms.ie  
www.conynghamarms.ie

- 14 bedrooms
- 5 bedrooms for twin occupancy
- Restaurant capacity 75
- Private dining capacity 150
- Bar capacity 75
- 51km from Dublin Airport (approx 38 mins by car)
- 56km from Dublin city (approx 1 hr 10 mins by car)
- Accessible by public transport



Map Ref  
5

Located in the historic village of Slane, County Meath, just 45 minutes from Dublin Airport, Conyngham Arms Hotel offers the ideal blend of heritage charm and modern business convenience. Housed in a beautifully restored 18th-century coaching inn, the hotel provides elegant accommodation, exceptional dining, and fully equipped meeting and event spaces tailored to today's professional needs. With high-speed Wi-Fi, audiovisual facilities, and bright, versatile rooms, its spaces are designed to foster productivity and engagement, perfect for board meetings, conferences, or training sessions. Customisable packages, attentive support, and bespoke catering ensures every event runs seamlessly. Guests can unwind in stylish bedrooms, enjoy locally inspired cuisine in its renowned restaurant, and explore the scenic Boyne Valley during downtime. Whether hosting a business event or seeking a comfortable base near Dublin, Conyngham Arms Hotel combines professional efficiency with warm Irish hospitality.

Meeting Space	U Shape	Theatre	Classroom	Boardroom	Banquet	Reception	Cabaret	Length x Width	Ceiling Height	Area Sqm
Library room	14	N/A	N/A	17	17	N/A	N/A	8 x 6	N/A	48
Card Room	16	N/A	N/A	20	20	N/A	N/A	6 x 11	N/A	66
Willow Suite	60	150	N/A	150	150	150	75	19 x 18	N/A	342

# DARNLEY LODGE HOTEL

Venue & Accommodation

★★★

## Darnley Lodge Hotel Joe McGovern

Main Street  
Athboy  
Co Meath  
C15 YP2K

+353 46 943 2283  
info@darnleylodgehotel.ie  
www.darnleylodgehotel.ie

- 14 bedrooms
- 7 bedrooms for twin occupancy
- Bar food available
- Private dining capacity 350
- Bar capacity 150
- 29km from Dublin Airport (approx 50 mins by car)
- 66km from Dublin city (approx 1 hr 10 mins by car)
- Accessible by public transport



Map Ref  
6

Located in the heart of the Boyne Valley, the Darnley Lodge Hotel offers an ideal blend of convenience, comfort, and professional service for corporate gatherings of all sizes. With 14 well-appointed guest bedrooms and flexible conference spaces equipped with modern AV facilities, we ensure seamless meetings, workshops, and presentations.

Meeting Space	U Shape	Theatre	Classroom	Boardroom	Banquet	Reception	Cabaret	Length x Width	Ceiling Height	Area Sqm
Darnley Suite	N/A	300	75	N/A	200	N/A	N/A	10 x 18	4.24	158.5
Darnley Suite Left	20	160	40	40	80	N/A	70	10 x 12	3.21	72
Darnley Suite Right	16	70	35	25	50	N/A	160	10 x 6	2.6	24.78
Earl Suite	N/A	N/A	N/A	N/A	N/A	N/A	N/A	5 x 11	N/A	N/A
Leinster Room	16	40	N/A	14	N/A	N/A	N/A	5 x 8	N/A	N/A

# DUNBOYNE CASTLE HOTEL

Venue & Accommodation  
★★★★

## Dunboyne Castle Hotel Sarah Dallas

Castlefarm  
Dunboyne  
Co. Meath  
A86 PW63

+353 1 801 3500  
sdallas@dunboynecastlehotel.com  
www.dunboynecastlehotel.com

- 145 bedrooms
- 38 bedrooms for twin occupancy
- Restaurant capacity 130
- Private dining capacity 280
- Bar capacity 130
- 21km from Dublin Airport (approx 25 mins by car)
- 19 from Dublin city (approx 42 mins by car)
- Accessible by public transport



Map Ref  
7

Nestled in the heart of Meath and just a short drive from Dublin City and Airport, Dunboyne Castle Hotel & Spa offers a truly memorable setting for meetings and events. Set on 21 acres of landscaped grounds, the hotel blends historic charm with modern elegance, featuring a beautifully restored Georgian house and a range of purpose-built event spaces. Whether you're planning a board meeting, conference, team-building day or private celebration, the hotel's flexible rooms — including the impressive Tara Suite and character-filled Old House boardrooms — cater for gatherings from 2 to 300 guests. With natural light, state-of-the-art AV, and a dedicated events team, every detail is thoughtfully managed. Add in ample free parking, award-winning dining, and a luxury spa, and you've everything you need for a successful and enjoyable event.

Meeting Space	U Shape	Theatre	Classroom	Boardroom	Banquet	Reception	Cabaret	Length x Width	Ceiling Height	Area Sqm
Tara Suite	75	300	150	80	280	240	160	23.4 x 15.7	3.8	367.4
Ui Neill Suite	40	200	60	40	100	90	70	11.6 x 15.7	3.8	130.9
Ui Brian Suite	40	200	60	40	100	90	70	11.6 x 15.7	3.8	130.9
Darley Suite	40	180	80	40	130	120	80	15.3 x 14.5	3	251
Sycamore Suite	30	80	40	35	N/A	N/A	50	16.5 x 9.1	2.2	137
Cedar Suite	25	60	20	28	N/A	N/A	30	8.7 x 9.1	2.2	79.2
Alder Suite	10	20	N/A	10	N/A	N/A	N/A	7.8 x 3.7	2.2	28.9
Copper Beech Suite	10	20	N/A	25	N/A	N/A	N/A	7.8 x 3.7	2.2	28.9
Francini Suite	24	50	25	25	50	N/A	30	9.8 x 6.7	4.5	65.7
Drawing Room	24	50	25	12	N/A	40	30	9.8 x 6.7	4.5	65.7
Keating Suite	10	20	N/A	10	N/A	N/A	N/A	7.6 x 5.1	3.5	38.8
Ormond Suite	N/A	N/A	N/A	8	N/A	N/A	N/A	5.9 x 4.8	3.5	28.3

# THE GLENSIDE HOTEL

Venue & Accommodation  
★★★

## The Glenside Hotel

Dublin Road, Drogheda  
Co Meath  
A83 V070

## Karen Dunne

+353 41 982 9999  
enquiries@theglenside.ie  
www.theglenside.ie

- 17 bedrooms
- 8 bedrooms for twin occupancy
- Restaurant capacity 100
- Private dining capacity 180
- Bar capacity 100
- 33km from Dublin Airport (approx 30 mins by car)
- 49km from Dublin city (approx 40 mins by car)
- Accessible by public transport



Map Ref  
8

Located just outside Drogheda, only five minutes from the M1 motorway, The Glenside Hotel is the perfect venue for corporate meetings, conferences, and business events. With free on-site parking for up to 100 vehicles and easy access to the Dublin–Dundalk bus route, it offers exceptional convenience for delegates traveling from Dublin (30 minutes) or Belfast (one hour). The hotel features 17 comfortable bedrooms, including eight twin-bedded rooms, all equipped with complimentary Wi-Fi. For larger events, the elegant Eilís Suite accommodates up to 200 guests in a theatre-style layout and is fully equipped with a state-of-the-art sound system, air conditioning, automatic screen and projector, microphones, flip charts, and catering available on request. For smaller meetings or breakout sessions, Henry's Restaurant provides an intimate and versatile setting with full dining options. The Glenside Hotel combines professional facilities, modern amenities, and warm hospitality—making it an ideal choice for your next corporate event.

Meeting Space	U Shape	Theatre	Classroom	Boardroom	Banquet	Reception	Cabaret	Length x Width	Ceiling Height	Area Sqm
Henry's	20	80	50	40	100	100	60	17 x 7	N/A	N/A
Eilís Suite	70	200	120	80	180	180	140	18.6 x 10.7	N/A	N/A

# THE JOHNSTOWN ESTATE

Venue & Accommodation

★★★★

## The Johnstown Estate Gael Allen

Enfield  
Co Meath  
A83 V070  
+353 87 149 2527 / 46 954 0000  
gallen@thejohnstownestate.com  
www.thejohnstownestate.com

- 128 bedrooms
- 32 self-catering lodges
- Restaurant capacity 180
- Private dining capacity 650
- Bar capacity 160
- 50km from Dublin Airport (approx 41 mins by car)
- 44km from Dublin city (approx 52 mins by car)
- Accessible by public transport



Map Ref  
9

Recently awarded Ireland's Best Business & Conference Hotel at the Virgin Media Gold Medal Awards, The Johnstown Estate offers an exceptional setting for meetings, events, and residential conferences just 35 minutes from Dublin City Centre. From the contemporary Forde Suites, featuring art deco design, a grand ballroom for up to 650 guests, and The Orangery cocktail bar and terrace, to the elegant Manor Business Suites in the original Georgian Manor House, the Estate provides spaces to suit every occasion. The Manor offers eight beautifully appointed meeting rooms, complete with oak boardroom tables, natural light, and a charming Mezzanine Gallery for coffee breaks and informal networking. Across the 120-acre estate, guests enjoy refined dining, luxurious accommodation, and access to Ireland's Premier Spa Resort and leisure club. Whether hosting strategy sessions, conferences, or team retreats, The Johnstown Estate seamlessly blends heritage, innovation, and hospitality for an unforgettable experience.

Meeting Space	U Shape	Theatre	Classroom	Boardroom	Banquet	Reception	Cabaret	Length x Width	Ceiling Height	Area Sqm
The Grand Ballroom	N/A	1,000	500	N/A	700	1,000	513	36.1 x 16.5	N/A	N/A
The Ballroom	N/A	710	300	N/A	460	700	360	36.1 x 16.5	N/A	N/A
The Shackleton	70	300	160	92	240	350	160	19.2 x 16.5	N/A	N/A
The Wilde	60	200	130	82	200	300	120	16.9 x 16x5	N/A	N/A
The Yeats	60	300	132	60	220	340	130	14.2 x 19.3	N/A	N/A
The Mabel	46	180	72	54	120	200	80	14.2 x 11.7	N/A	N/A
The Kay	40	100	50	39	60	140	45	14.2 x 7.6	N/A	N/A

# HAMLET COURT HOTEL

Venue & Accommodation

★★★

## Hamlet Court Hotel

Johnstown Bridge  
Enfield  
Co Meath  
A83 WC04

## Sharon McCabe

+353 46 954 1200  
sharon@thehamlet.ie  
www.thehamlet.ie

- 30 bedrooms
- 22 bedrooms for twin occupancy
- Restaurant capacity 90
- Private dining capacity 270
- Bar capacity 200
- 50km from Dublin Airport (approx 40 mins by car)
- 44km from Dublin city (approx 51 mins by car)
- Accessible by public transport



Map Ref  
10

Inspired by Europe's most distinguished ballrooms, The Hamlet Court seamlessly blends traditional elegance with contemporary sophistication, making it an exceptional choice for any event, regardless of its scale or intimacy. Their function room, one of the largest in the region, accommodates up to 350 guests for banqueting and 500 for concert-style seating.

Meeting Space	U Shape	Theatre	Classroom	Boardroom	Banquet	Reception	Cabaret	Length x Width	Ceiling Height	Area Sqm
Faire English Suite	N/A	28	20	N/A	N/A	N/A	N/A	8 x 4	N/A	N/A
Cill Dara Suite	N/A	160	80	N/A	N/A	N/A	N/A	19 x 12	N/A	N/A
Blackwater	N/A	160	80	N/A	N/A	N/A	N/A	19 x 11	N/A	N/A
Full Ballroom	N/A	700	140	N/A	N/A	N/A	N/A	19 x 23	N/A	N/A

# HEADFORT ARMS HOTEL

Venue & Accommodation  
★★★★

## Headfort Arms Hotel

Headfort Place  
Kells  
Co Meath  
A82 D2C1

+353 46 924 0063  
events@headfortarms.ie  
www.headfortarms.ie

- 45 bedrooms
- 40 bedrooms for twin occupancy
- Restaurant capacity 80
- Private dining capacity 350
- Bar capacity 300
- 67km from Dublin Airport (approx 45 mins by car)
- 66km from Dublin city (approx 60 mins by car)
- Accessible by public transport



Map Ref  
11

The four-star Headfort Arms Hotel in Kells, County Meath, combines 18th-century charm with modern business amenities, making it an ideal destination for corporate retreats, meetings, and events. Just 45 minutes from Dublin Airport, the hotel offers convenient access to Ireland's Ancient East while providing a professional yet welcoming environment. With versatile conference and event spaces, high-speed connectivity, and tailored catering from our award-winning Vanilla Pod Restaurant, we ensure seamless experiences for every business occasion. Guests can unwind after meetings with golf at the 36-hole Headfort Golf Club, wellness treatments at the Headfort Spa Rooms, or dining on the heated Terrace and Garden Kitchen. Led by the Duff family for over 50 years, the Headfort Arms blends heritage, innovation, and personalized service - where business and leisure meet in the heart of the Boyne Valley. They also specialise in immersive Team Building Packages with local providers

Meeting Space	U Shape	Theatre	Classroom	Boardroom	Banquet	Reception	Cabaret	Length x Width	Ceiling Height	Area Sqm
Kenlis Suite	N/A	450	200	100	350	500	200	15 x 2	4.5	N/A
Kenlis Suite Small	N/A	100	50	40	70	150	50	15 x 8	3.5	N/A
Kenlis Suite Large	N/A	300	100	80	180	350	100	15 x 15m	4.5	N/A
Blackwater Suite	N/A	40	15	15	40	40	15	12 x 3.5	2.8	N/A

# KNIGHTSBROOK HOTEL

Venue & Accommodation  
★★★★

## Knightsbrook Hotel

Dublin Road  
Trim  
Co Meath  
C15 WYF4

- 131 bedrooms
- 68 bedrooms for twin occupancy
- 28 self catering lodges
- Restaurant capacity 200
- Private dining capacity 450
- Bar capacity 150

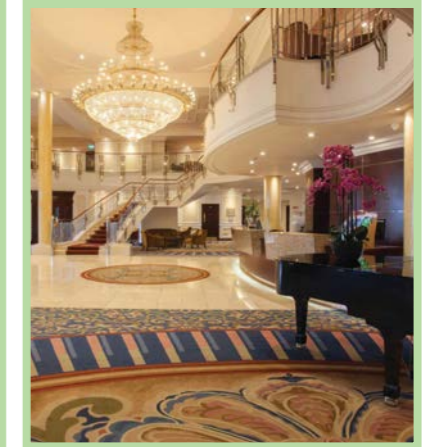
Map Ref  
12

Knightsbrook Hotel, Spa & Golf Resort is a premier four-star business destination located just 35 minutes from Dublin Airport in the heritage town of Trim, Co. Meath. Designed to meet the needs of modern professionals, the resort offers extensive conference and meeting facilities, including a self-contained conference centre, multiple breakout rooms, and event spaces equipped with state-of-the-art AV technology. Guests can enjoy luxury accommodation, fine dining, and award-winning leisure amenities, including an 18-hole championship golf course and the River Spa. Ample free parking for 600 cars, complimentary Wi-Fi, and tailored corporate packages make it ideal for meetings, training sessions, team-building events, and corporate retreats. With exceptional service, a dedicated events team, and easy access to Dublin and major transport routes, Knightsbrook seamlessly blends business efficiency with resort-style relaxation, ensuring a productive and memorable stay for every guest.

## Clara Clarke

+353 87 692 2266 / 046 948 2100  
clara.clarke@knightsbrook.com  
www.knightsbrook.com

- 48km from Dublin Airport (approx 35 mins by car)
- 45km from Dublin city (approx 45 mins by car)
- Accessible by public transport



Meeting Space	U Shape	Theatre	Classroom	Boardroom	Banquet	Reception	Cabaret	Length x Width	Ceiling Height	Area Sqm
Barbican Suite	170	1,100	500	170	450	1500	260	31.6 x 24	4	758
Barbican Suite I	70	520	250	70	200	750	120	15.8 x 24	4	379
Barbican Suite II	70	520	250	70	200	750	120	15.8 x 24	4	379
Hugh De Lacy Suite	40	200	120	50	130	200	80	16 x 15.4	3	246
Hugh De Lacy Suite I	20	60	50	30	60	120	40	16 x 8.4	3	134
Hugh De Lacy Suite II	10	40	20	18	40	60	26	16 x 7	3	112
Gulliver Suite	40	220	100	50	150	300	100	11 x 29.5	2.5	324
Gulliver Suite I	20	100	50	20	75	150	50	11 x 11.8	2.5	130
Gulliver Suite II	20	100	50	20	75	150	50	11 x 17.7	2.5	195
Ash Room	20	35	18	24	24	30	24	8.5 x 8	2.5	68
Oak Room	20	30	18	24	24	20	16	10 x 5.5	2.5	55
Maple Room	N/A	N/A	N/A	12	N/A	-N/A	N/A	6.7 x 3.8	2.5	25.5
Elm Room	6	10	8	8	N/A	N/A	8	6.7 x 3.8	2.5	25.5

# NEWGRANGE HOTEL

Venue & Accommodation  
★★★

**Newgrange Hotel**  
Bridge Street  
Navan  
Co Meath  
C15 A6WV

**Ian Hunt & Ashley Brennan**  
+353 46 903 3277  
ihunt@cusackhotels.com  
abrennan@cusackhotels.com  
www.newgrangehotel.com



- 62 bedrooms
- 49 bedrooms for twin occupancy
- Restaurant capacity 70
- Private dining capacity 350
- Bar capacity 70
- 50km from Dublin Airport (approx 45 mins by car)
- 51km from Dublin city (approx 60 mins by car)
- Accessible by public transport

Map Ref  
**13**

The Newgrange Hotel, located in the heart of Navan, Co. Meath, is a premier destination for business and leisure travelers alike. Combining traditional charm with modern comfort, the hotel offers exceptional facilities including fully equipped conference and meeting rooms, ideal for corporate events, seminars, and private functions. Guests can enjoy elegant accommodation, complimentary Wi-Fi, and on-site dining options that showcase locally sourced cuisine. Its convenient location provides easy access to major transport links and the M3 motorway, making it a strategic base for business in the Boyne Valley region and beyond. With professional service, flexible event spaces, and a welcoming atmosphere, The Newgrange Hotel ensures a seamless and productive stay for every guest.

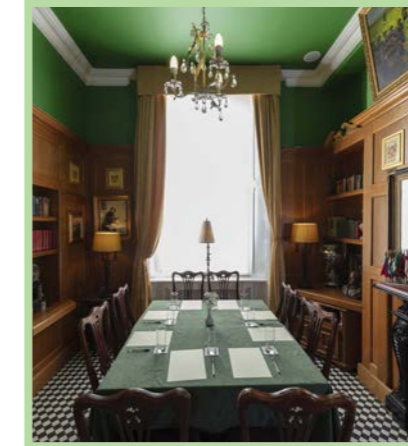
Meeting Space	U Shape	Theatre	Classroom	Boardroom	Banquet	Reception	Cabaret	Length x Width	Ceiling Height	Area Sqm
Knowth Suite	N/A	400	200	200	350	N/A	N/A	N/A	N/A	340
Knowth 1	N/A	250	140	140	150	N/A	N/A	N/A	N/A	205
Knowth 2	N/A	200	120	120	150	N/A	N/A	N/A	N/A	135
Dowth Suite	N/A	50	30	30	50	N/A	N/A	N/A	N/A	68
Club Lounge	N/A	30	20	20	30	N/A	N/A	N/A	N/A	34
Russell Suite	N/A	150	120	120	120	N/A	N/A	N/A	N/A	205
Castle Suite	N/A	30	15	15	N/A	N/A	N/A	N/A	N/A	60

# SCHOLARS TOWNHOUSE HOTEL

Venue & Accommodation  
★★★

**Scholars Townhouse Hotel**  
King Street  
Drogheda  
Co Louth  
A92 ED71

**Aisling O' Donnell**  
+353 41 983 5410  
aisling@scholarshotel.com  
www.scholarshotel.com



- 16 bedrooms
- 5 bedrooms for twin occupancy
- Restaurant capacity 60
- Private dining capacity 30
- Bar capacity 60
- 32km from Dublin Airport (approx 35 mins by car)
- 50km from Dublin city (approx 45 mins by car)
- Accessible by public transport

Map Ref  
**14**

The boardroom is fitted with high quality technology, including WIFI, screens and a large projector, making it an ideal location for private meetings. Our staff can assist you in all aspects of set-up to ensure that meetings run as smoothly as possible. They also offer a non-intrusive dining experience so that you can enjoy our delicious food in comfort, while still focusing your meeting goals.

Meeting Space	U Shape	Theatre	Classroom	Boardroom	Banquet	Reception	Cabaret	Length x Width	Ceiling Height	Area Sqm
West Wing	10	30	10	15	N/A	N/A	N/A	N/A	N/A	N/A
Chef's Dining Room	N/A	N/A	N/A	8	N/A	N/A	N/A	N/A	N/A	N/A

# THE STATION HOUSE HOTEL

Venue & Accommodation

★★★★

## The Station House Hotel

**Caroline Hegarty**

+353 42 902 5239

info@stationhousehotel.ie

www.stationhousehotel.ie

Main Street  
Kilmessan  
Co Meath  
C15 N40D

- 19 bedrooms
- 2 bedrooms for twin occupancy
- Restaurant capacity 60
- Private dining capacity 180
- Bar capacity 60
- 43km from Dublin Airport (approx 45 mins by car)
- 35km from Dublin city (approx 37 mins by car)
- Accessible by public transport



Map Ref  
**15**

Established in 1983, the family-owned and multi award-winning Station House Hotel provides a luxurious setting for corporate meetings, product launches and executive retreats. Set on 12 acres of landscaped gardens and woodland, as a proud member of Ireland's Blue Book, the hotel offers privacy, discretion and a high standard of service. Their experienced events team work with clients to plan and deliver seamless, well-executed events. The Station House is fully equipped with modern meeting facilities to support productive and effective gatherings, while also offering a range of team-building and leisure activities on-site and within the local area. Widely recognised for its culinary excellence, the hotel showcases premium Irish and Boyne Valley produce, complemented by an extensive wine list curated by their in-house Sommelier. Conveniently located just 30 minutes from Dublin Airport and 40 minutes from Dublin City centre, the hotel is easily accessible for both national and international delegates.

Meeting Space	U Shape	Theatre	Classroom	Boardroom	Banquet	Reception	Cabaret	Length x Width	Ceiling Height	Area Sqm
Carriage Suite	60	160	N/A	60	180	N/A	100	N/A	N/A	N/A
Library	N/A	10	N/A	8	12	N/A	6	N/A	N/A	N/A
Signal Restaurant*	20	40	N/A	20	60	N/A	20	N/A	N/A	N/A

\* Available Monday & Tuesday, and Wednesday - Friday for exclusive packages only

# TRIM CASTLE HOTEL

Venue & Accommodation

★★★★

## Trim Castle Hotel

**Gael Allen**

+353 87 149 2527 / 46 948 3000

gallen@thejohnstownestate.com

www.trimcastlehotel.com

Castle Street  
Trim  
Co Meath  
C15 FCY8

- 68 bedrooms
- 50 bedrooms for twin occupancy
- Restaurant capacity 100
- Private dining capacity 250
- Bar capacity 100
- 50km from Dublin Airport (approx 42 mins by car)
- 47km from Dublin city (approx 60 mins by car)
- Accessible by public transport



Map Ref  
**16**

Trim Castle Hotel's conference facilities are ideal for organisations seeking a memorable location that delivers both convenience and a strong sense of place. With natural light filling its versatile event spaces and panoramic views of the 12th-century Trim Castle, the venue offers a rare blend of ambience and practicality that elevates meetings, conferences and corporate functions while only 40 minutes from Dublin Airport. Whether hosting a board meeting, corporate function, team-building day, or exhibition, Trim Castle Hotel provides flexible, light-filled spaces equipped with full AV facilities and high-speed Wi-Fi. A dedicated events team ensures every detail is flawlessly executed, from catering and bespoke dining to setup and technical support. Guests can enjoy contemporary surroundings, exceptional service, and the opportunity to explore the area's legendary attractions. With panoramic castle views and easy accessibility from Dublin City Centre, Trim Castle Hotel is where business inspiration meets historic charm.

Meeting Space	U Shape	Theatre	Classroom	Boardroom	Banquet	Reception	Cabaret	Length x Width	Ceiling Height	Area Sqm
The Great Hall	100	500	400	100	300	N/A	220	21 x 21	N/A	N/A
The Tower	30	100	60	30	50	N/A	40	13.5 x 7.5	N/A	N/A
The Bective	30	100	70	30	60	N/A	40	12.5 x 9.5	N/A	N/A

# BOYNE HOUSE SLANE

Venue & Specialist Accommodation

★★★★

## Boyne House Slane

Chapel Street  
Slane  
Co Meath  
C15 P657

## Tracie Ward

+353 41 988 4444  
salesandevents@conynghamarms.ie  
www.boynehouseslane.ie

- 10 bedrooms
- 3 bedrooms for twin occupancy
- Private dining capacity 23
- 51km from Dublin Airport (approx 40 mins by car)
- 56km from Dublin city (approx 1 hr 5 mins by car)
- Accessible by public transport



Map Ref  
1

Boyne House Slane offers a corporate oasis in the heart of the Boyne Valley. Nestled in historic Slane, Co. Meath. Boyne House Slane offers an exclusive setting where history, luxury, and productivity meet. This beautifully restored 1807 rectory blends timeless charm with modern sophistication, featuring ten elegantly appointed guest bedrooms and a versatile event space designed to inspire innovation and collaboration for smaller groups. Set within private, gated grounds surrounded by mature woodland, Boyne House Slane provides a serene and distraction-free environment ideal for corporate retreats, strategy sessions, team meetings, and executive gatherings. Tailored corporate packages, seamless event coordination, and exceptional catering ensure every detail is delivered to the highest standard.

Meeting Space	U Shape	Theatre	Classroom	Boardroom	Banquet	Reception	Cabaret	Length x Width	Ceiling Height	Area Sqm
Cillghrean Suite	N/A	N/A	N/A	20	N/A	N/A	N/A	10 x 15	N/A	150

# BOYNE VIEW HOUSE

Venue & Specialist Accommodation

★★★★

## Boyne View House

Drinadaly  
Trim  
Co Meath  
C15 PRR0

## Deirdre Hoey

+353 086 839 2946  
deirdre@boyneview.ie  
www.boyneview.ie

- 23 bedrooms
- 6 bedrooms for twin occupancy
- Private dining capacity 60\*
- 41km from Dublin Airport (approx 50 mins by car)
- 48km from Dublin city (approx 60 mins by car)
- Not accessible by public transport



Map Ref  
2

Boyne View House is a boutique country retreat offering refined accommodation in a versatile event space set amongst flowered gardens and scenic farmland. The event space is tailored to corporate retreats and strategic business gatherings. Set in a private, distraction free setting that encourages focus, innovation and a meaningful connection. They offer a refreshing alternative to conventional conference venues where productivity meets peace and nature. Whether you are planning a business meeting, training day, wellness retreat or team bonding, Moy's Summer House and its accommodation can be individually tailored to your specific requirements. Although they do not run their own food facilities, they work alongside established local catering specialists and curated outdoor activity partners to deliver seamless, tailor-made corporate event experiences designed around client's unique vision and business needs.

Meeting Space	U Shape	Theatre	Classroom	Boardroom	Banquet	Reception	Cabaret	Length x Width	Ceiling Height	Area Sqm
Moy's Summer House	20	80	48	18	80	40	N/A	N/A	N/A	N/A

\* Moy's Summer House caters for 60 guests, Dining Room caters for 20 guests. Bar Facilities: coffee, teas, juices and bottled water are available. They can organise a licensed mobile bar partner.

# KILLEEN CASTLE

Venue & Specialist Accommodation

★★★★

## Killeen Castle

Dunsany  
Co Meath  
C15 FH39

## Geraldine Farrell

+353 1 689 3012  
events@killeencastle.com  
www.killeencastle.com



- 26 bedrooms
- 22 bedrooms for twin occupancy
- Restaurant capacity 160
- Private dining capacity 160
- Bar capacity 70
- 25km from Dublin Airport (approx 30 mins by car)
- 30km from Dublin city (approx 35 mins by car)
- Not accessible by public transport

Map Ref  
**3**

Killeen Castle is conveniently located just 30 minutes from Dublin airport, making it easy to access. As you journey there, you'll notice that you're leaving behind the chaos of traffic and entering a tranquil countryside setting. When you arrive, unwinding comes naturally. The Sycamore Suite and Events Centre are perfect venues for hosting business meetings and events. Set in a relaxed countryside atmosphere with an abundance of natural daylight, this meeting space is perfect for inspiring strategic thinking. Your team will be inspired to transform ideas and concepts into strategic plans of action, setting you up for success when you return to your office. You can mix business with pleasure by taking advantage of the 18-hole Jack Nicklaus Signature Golf Course or team-building activities provided by their external partners. These activities can take place on the 600-acre estate or within the conference facilities.

Meeting Space	U Shape	Theatre	Classroom	Boardroom	Banquet	Reception	Cabaret	Length x Width	Ceiling Height	Area Sqm
Sycamore Suite	50	220	100	40	160	100	100	9.8 x 26	4	36
Oak Suite	40	130	60	40	80	50	40	7.4 x 13.5	3	100
Sixteen	40	80	30	40	60	40	30	11 x 12.8	3.5	140
Birch	N/A	16	8	10	8	10	8	4 x 5.8	3	23
Ash Suite	N/A	N/A	N/A	4	N/A	4	N/A	2.8 x 4.7	3	13

# LOUGHCREW ESTATE

Venue & Specialist Accommodation

★★★★

## Loughcrew Estate

Loughcrew  
Oldcastle  
Co Meath  
A82 EV62

## Emily Naper

+353 49 854 1356  
admin@loughcrew.com  
www.loughcrew.com



- 16 bedrooms
- 7 bedrooms for twin occupancy
- Coffee Shop capacity 50
- Private dining capacity 130
- Bar capacity 40
- 81km from Dublin Airport (approx 1 hr 15 mins by car)
- 84km from Dublin city (approx 1 hr 6 mins by car)
- Not fully accessible by public transport

Map Ref  
**4**

Loughcrew Estate is an exclusive countryside venue set on 200 acres of tranquil parkland in Oldcastle, County Meath. Just an hour from Dublin, it offers a unique blend of historic character and contemporary comfort. The estate hosts elegant weddings, private retreats, hen parties, garden tours, and intimate group gatherings, with Loughcrew House providing accommodation for up to 30 guests. Additional lodging is available nearby through trusted local partners. Surrounded by rolling hills, mature woodlands, and sweeping views, Loughcrew Estate provides a serene setting ideal for celebrations and corporate or wellness-focused events. Its versatile indoor and outdoor spaces, personalised service, and breathtaking natural backdrop make it a distinctive choice for clients seeking a refined yet relaxed experience.

Meeting Space	U Shape	Theatre	Classroom	Boardroom	Banquet	Reception	Cabaret	Length x Width	Ceiling Height	Area Sqm
Banquet room	N/A	N/A	N/A	N/A	120	N/A	N/A	12 x 7	N/A	N/A

# SLANE CASTLE

Venue & Specialist Accommodation

★★★★

## Slane Castle

Slane  
Co Meath

## Jack Fitzsimons

+353 41 988 4477  
commercial@slanecastle.ie  
www.slanecastle.ie



- 7 bedrooms
- 3 bedrooms for twin occupancy
- Restaurant capacity 60
- Private dining capacity 20
- Bar capacity 20
- 50km from Dublin Airport (approx 50 mins by car)
- 50km from Dublin city (approx 60 mins by car)
- Accessible by public transport to Slane

Map Ref  
5

Slane Castle is one of Ireland's most iconic heritage estates, blending centuries of history with world-class hospitality and music culture. Located in the heart of the Boyne Valley, the castle has been home to the Conyngham family since the 18th century and remains a working estate today. The estate is internationally renowned for its legendary outdoor concerts, having hosted global artists such as U2, The Rolling Stones, and Metallica, attracting audiences from around the world. Beyond music, Slane Castle offers guided tours, luxury event spaces, and premium accommodation, making it a sought-after venue for corporate gatherings, and private events. In recent years, the estate expanded into craft spirits with the launch of Slane Irish Whiskey, produced at its on-site distillery. Combining heritage, innovation, and unforgettable live experiences, Slane Castle stands as a dynamic cultural and business destination rooted in Irish tradition.

Meeting Space	U Shape	Theatre	Classroom	Boardroom	Banquet	Reception	Cabaret	Length x Width	Ceiling Height	Area Sqm
Castle Courtyard	N/A	N/A	N/A	N/A	200	N/A	N/A	12 x 18	N/A	N/A
The Ballroom	N/A	N/A	N/A	N/A	106	N/A	N/A	9.94 x 11.6	N/A	N/A
The Dining Room	N/A	N/A	N/A	N/A	N/A	N/A	N/A	N/A	N/A	N/A
The Drawing Room	N/A	N/A	N/A	N/A	N/A	50	N/A	N/A	N/A	N/A
The Great Hall	N/A	80	N/A	N/A	N/A	120	N/A	N/A	N/A	N/A
Gandon Restaurant	N/A	N/A	N/A	N/A	60	N/A	N/A	N/A	N/A	N/A
Brownes Bar	N/A	N/A	N/A	N/A	N/A	20	N/A	N/A	N/A	N/A
Castle Night Club	N/A	N/A	N/A	N/A	N/A	100	N/A	N/A	N/A	N/A

# TANKARDSTOWN HOUSE

Venue & Specialist Accommodation

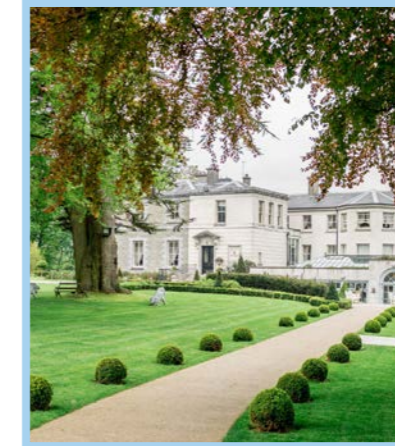
★★★★★

## Tankardstown House

Rathkenny, Slane  
Co Meath  
C15 D535

## Tadhg Carolan

+353 41 982 4621  
tadhg@tankardstown.ie  
www.tankardstown.ie



- 52 bedrooms
- 7 bedrooms for twin occupancy
- Restaurant capacity 78
- Private dining capacity 250
- 57km from Dublin Airport (approx 45 mins by car)
- 59km from Dublin city (approx 1 hr 15 mins by car)
- Accessible by public transport to Slane

Map Ref  
6

Set amidst 80 acres of parkland and courtyards in the heart of County Meath, Tankardstown House offers a refined and inspiring venue for board meetings, corporate events, and strategy retreats. This 18th-century estate combines heritage and elegance with modern luxury, providing a professional yet relaxed environment just under an hour from Dublin. With a selection of elegant meeting spaces, private dining rooms, and luxurious accommodation, Tankardstown's versatile event spaces, state of the art facilities, and discreet service ensure a seamless experience and lasting impressions. Guests can enjoy the tranquility of the countryside, award-winning dining at Brabazon Restaurant, and the privacy to focus, connect, and create.

Meeting Space	U Shape	Theatre	Classroom	Boardroom	Banquet	Reception	Cabaret	Length x Width	Ceiling Height	Area Sqm
Orangery	40	200	70	50	250	200	70	N/A	N/A	123.6
Red & Gold Room	N/A	N/A	N/A	20	20	N/A	20	8.2 x 5.5	N/A	45.1
Drawing Room	25	60	N/A	30	40	N/A	30	13 x 5.25	N/A	68.25

# EMERALD PARK

Alternative Venues

## Emerald Park

Ashbourne  
Co Meath  
A84 EA02

Artur Ivanov / Monique Doyle

+353 1 835 1999  
sales@emeraldpark.ie  
www.emeraldpark.ie

- Restaurant capacity 240
- Private dining capacity 250
- Bar capacity 240
- Private ride hire
- Private Raptors Show
- 28km from Dublin Airport (approx 30 mins by car)
- 29km from Dublin city (approx 30 mins by car)
- Not fully accessible by public transport



Map Ref  
2

Emerald Park, Ireland's only theme park and zoo, offers a truly distinctive setting for corporate meetings, team-building days, and company events. Located in the heart of County Meath, the park blends professional facilities with an atmosphere of adventure and creativity, making it an inspiring alternative to traditional meeting spaces. Whether hosting a small strategy session or a large-scale corporate gathering, Emerald Park delivers a memorable experience that combines business focus with a touch of fun — leaving attendees motivated, connected, and ready to take on new challenges.

Meeting Space	U Shape	Theatre	Classroom	Boardroom	Banquet	Reception	Cabaret	Length x Width	Ceiling Height	Area Sqm
Rafter Room	70	400	300	70	250	450	150	31.75 x 16.3	43.5	475
The Lodge	50	350	350	50	240	300	125	32.4 x 26.5	54.5	640
The Classroom	15	30	30	10	20	50	20	11.6 x 7.2	27.5	83.5
Garden Marquee	50	300	150	50	200	300	100	24 x 10	34	240

# FAIRYHOUSE RACECOURSE

Alternative Venues

## Fairyhouse Racecourse

Fairyhouse Rd, Ballybin  
Ratoath  
Co Meath  
A85 XK30

John Sheridan  
Catherine Jones McCann

+353 1 825 6051  
info@fairyhouse.ie  
www.fairyhouse.ie

- Restaurant capacity 2,000
- Private dining capacity 1,800
- Bar capacity 1,000
- 27km from Dublin Airport (approx 30 mins by car)
- 21km from Dublin city (approx 26 mins by car)
- Not fully accessible by public transport



Map Ref  
3

Set in the heart of Meath, within Ireland's Ancient East, Fairyhouse Racecourse offers a truly distinctive setting for suites, large functions, and events of every kind. As the proud home of the Irish Grand National, Fairyhouse blends heritage, scale, and modern capability to deliver events that feel both prestigious and effortless. Our versatile suites and expansive function spaces are designed to adapt — seamlessly transforming from high-impact corporate conferences and meetings to elegant private celebrations, gala dinners, and large-scale social occasions. Whether you're hosting an executive board meeting, a product launch, a team-building day, or a milestone celebration, Fairyhouse provides the space, flexibility, and atmosphere to make it memorable.

Meeting Space	U Shape	Theatre	Classroom	Boardroom	Banquet	Reception	Cabaret	Length x Width	Ceiling Height	Area Sqm
Bobbyjo	N/A	400	N/A	N/A	300	N/A	150	32 x 10	N/A	N/A
Arkle Suite	N/A	100	45	N/A	120	N/A	60	20 x 10	N/A	N/A
Ballyhack Suite	N/A	250	N/A	N/A	250	N/A	125	41 x 8	N/A	N/A
Ballyhack Ground Floor	N/A	600	N/A	N/A	450	N/A	225	38 x 9	N/A	N/A
Final Fence	N/A	80	45	N/A	100	N/A	50	17.5 x 7	N/A	N/A
Suite 6 -8	N/A	30	30	20	30	N/A	15	3.8 x 5	N/A	N/A
Suite 9-10	N/A	30	30	20	40	N/A	20	8.1 x 5	N/A	N/A
Suite 14	N/A	40	40	20	40	N/A	20	6 x 5.5	N/A	N/A
Suite 15	N/A	20	N/A	10	20	N/A	10	7 x 3	N/A	N/A
Suite 17	N/A	40	40	20	40	N/A	20	7 x 5.5	N/A	N/A
Suite 19	N/A	20	N/A	10	20	N/A	10	7 x 4	N/A	N/A
Suite 20-23	N/A	75	45	N/A	80	N/A	40	21 x 11.5	N/A	N/A
Suite 24	N/A	N/A	N/A	10	12	N/A	N/A	7 x 3	N/A	N/A

# NAVAN RACECOURSE

## Alternative Venues

### Navan Racecourse

Ciaran Flynn, Sam McNamara

Proudstown Rd  
Navan  
Co Meath  
C15 A623

+353 46 9021 135  
info@navanracecourse.ie  
www.navanracecourse.ie



- Restaurant capacity 770
- Private dining capacity 670
- Bar capacity 400
- 60km from Dublin Airport (approx 50 mins by car)
- 60km from Dublin city (approx 50 mins by car)
- Not fully accessible by public transport

Map Ref  
4

Navan Racecourse offers a distinctive and flexible setting for business events in the heart of County Meath. Easily accessible from Dublin and the wider Boyne Valley region, the racecourse provides a range of adaptable indoor spaces suitable for conferences, presentations, workshops and private dining, all supported by ample on-site parking and modern facilities. On racedays, clients can combine business with a memorable race day experience, offering guests the opportunity to enjoy top-class Irish racing alongside hospitality and networking. On non-race days, Navan functions as a versatile event venue, ideal for corporate off-sites, strategy days, team meetings, and private events in a relaxed, private setting. With experienced on-site support and the ability to tailor layouts and catering to suit individual requirements, Navan Racecourse delivers a professional yet unique alternative to traditional meeting venues.

Meeting Space	U Shape	Theatre	Classroom	Boardroom	Banquet	Reception	Cabaret	Length x Width	Ceiling Height	Area Sqm
Proudstown Suite	N/A	200	90	30	100	100	60	13 x 9.5	24	123.5
Bective Restaurant	20	60	55	25	60	60	35	11 x 7	24	77
O'Sullivan Suite	N/A	60	60	20	80	80	30	8.5 x 11	22.5	93.5
Boyne Suite	N/A	150	190	20	110	110	50	9 x 12.8	22.5	115.2



# OTHER ACCOMMODATION

## SPECIALIST ACCOMMODATION

### JOHNSFORT HOUSE FARMSTAY

200-year-old Johnsfort House is steeped in Irish charm and history. They have Highland cattle, sheep and chickens. Stunning self-catering cottages with original stone. Enjoy the countryside, meet the animals, take a walk on the farm path through the woodland. They also run private tours all over Ireland. [johnsfort.ie](http://johnsfort.ie)

Johnsfort House, Clonmellon, Navan, Co. Meath  
Tel +353 (0) 86 878 6194 / 86 373 3644  
E [richard@irelandatyourleisure.ie](mailto:richard@irelandatyourleisure.ie)

### TOM BLAKE HOUSE

A historic house in the heritage town of Kells, Co. Meath in the heart of the Boyne Valley. Tom Blake House provides luxury accommodation and exclusive private hire. It combines the warmth and hospitality of a B&B within the beautiful interiors of a boutique hotel. [tomblakehouse.ie](http://tomblakehouse.ie)

Bective Street, Kells, Co. Meath, A82 V3K0  
Tel +353 (0) 87 109 1252 / 087 718 9507  
E [tomblakehouse@gmail.com](mailto:tomblakehouse@gmail.com)

## B&B

### BALREASK BAR, RESTAURANT AND GUEST ACCOMMODATION

Balreask Bar & Restaurant is a family run bar, restaurant, guest accommodation and function venue. Located on the outskirts of Navan, Balreask is the ideal location for the tourist and business visitor. [balreask.ie](http://balreask.ie)

Balreask Cross, Trim Road, Navan, Co. Meath  
Tel +353 (0) 46 907 8248  
E [info@balreask.ie](mailto:info@balreask.ie)

### CARAVOGUE HOUSE B&B

A purposely built bed & breakfast property offering a warm Irish welcome, with the modern upscale feel of a hotel. Situated in Trim, Co Meath, centrally and conveniently located just two minutes walk from the town centre and the many heritage attractions the beautiful town of Trim has to offer. [caravoguehouse.ie](http://caravoguehouse.ie)

Navan Road, Trim, Co Meath. C15P2N8  
Tel +353 (0) 46 949 0499  
E [rooms@caravoguehouse.ie](mailto:rooms@caravoguehouse.ie)

### TELTOWN HOUSE

17th century country house on 290 acres in the heart of the Boyne Valley. Situated close to where the historical Tailteann Games were held. Accommodation for 8-10, all bedrooms en suite with 3 reception rooms, log fires and jacuzzi and a full Irish breakfast included. Short distance to all historic sites. [teltownhouse.net](http://teltownhouse.net)

Teltown, Navan, Co. Meath  
Tel +353 (0) 46 902 3239 / (0) 87 665 9022  
E [teltownhouse1@gmail.com](mailto:teltownhouse1@gmail.com)

### WOODVIEW LODGE

A modern bungalow on a farm, with beautiful views of the open countryside. Just 3km from Trim and 40 minutes to Dublin Airport. There are 3 spacious en-suite bedrooms, a twin, king and triple. Free wifi, private parking and a continental breakfast available. Perfect for a quiet, relaxing stay. Find us on [booking.com](http://booking.com)

Adamstown, Trim, Co. Meath  
Tel +353 (0) 86 860 1337 / 87 601 9491  
E [woodviewlodge123@gmail.com](mailto:woodviewlodge123@gmail.com)

## SELF CATERING

### ASHBOURNE SELF CATERING

Ashbourne self-catering consist of a number of newly renovated properties in 3 separate locations. These properties are all ideally located close to Dublin Airport, Dublin City Centre and some of Ireland's most historical sites including The Hill of Tara, Newgrange Brú Na Bóinne and Bective Abbey. [ashbourneselfcatering.ie](http://ashbourneselfcatering.ie)

Donaghmore, Ashbourne, Co. Meath A84 W621  
Tel +353 (0) 87256 6380  
E [info@ashbourneselfcatering.ie](mailto:info@ashbourneselfcatering.ie)

### BECTIVE STUD APARTMENTS

Our self-catering apartments overlook the front garden and the courtyard within the Bective Estate. The apartments are newly refurbished, spacious, stylish and contemporary, with a fully equipped kitchen, separate bathroom and flat-screen TVs with complimentary Wi-Fi. Private entrance with dedicated secure parking. There is an onsite restaurant open Mon-Sat 9-5pm and over 4km of Woodland Walks. [bectivestud.com](http://bectivestud.com)

Bective Stud, Balgil, Navan, Co. Meath C15 X967  
Tel +353 (0) 46 902 2363  
E [info@bectivestud.com](mailto:info@bectivestud.com)

### THE COTTAGES

Winner of the Best Beach Holiday Home in Europe Award, The Cottages consist of 6 exclusive 300 year old thatched holiday cottages nestled in private, gated picturesque flower gardens directly on the beach. Superb luxury accommodation ideally located for your dream holiday, just 25 minutes from Dublin Airport. [cottages-ireland.com](http://cottages-ireland.com)

Seabank, Coast Rd, Bettystown, Co. Meath  
Tel +353 (0) 41 982 8104  
E [info@cottages-ireland.com](mailto:info@cottages-ireland.com)

### DECOY COUNTRY COTTAGES

Winner of the Best Tourism Business in Meath 2018, and Ireland's Best Holiday Home 2019, this beautifully restored stable mews provides 1,2,3 or 4 bedroom cottages in an exclusive, gated complex with landscaped gardens. Perfect for families and groups. Close to Tara & Newgrange. Indoor/outdoor play area, games room, relaxation room, gym, day spa, car e-charging. Just 30 minutes from Dublin. [decoycountrycottages.ie](http://decoycountrycottages.ie)

Garlow Cross, Navan, Co. Meath  
Tel +353 (0) 46 902 6960  
E [info@decoycountrycottages.ie](mailto:info@decoycountrycottages.ie)

### ECO LODGES, ROCK FARM SLANE

Stay in straw-bale eco lodges or a traditional farmhouse on our organic farm. Swallow's Nest eco-lodge sleeps 2 while Lime House is the largest straw-bale residential house in Ireland with 6 en-suite bedrooms and luxurious living space. River House is a 5-bed holiday home in a private riverside setting. Ideal for celebrations, corporate and special interest groups. Catering and activities are available on the farm. [rockfarmslane.ie](http://rockfarmslane.ie)

Slane, Co. Meath  
Tel +353 (0) 41 988 4861  
E [info@rockfarmslane.ie](mailto:info@rockfarmslane.ie)

### HIDEAWAY AT FOXHOLLOW

Fall in love with Hideaway at Foxhollow, located half way between Kells and Athboy in Fordstown, Co. Meath. This beautifully restored cut stone farmhouse guarantees comfort, luxury and a memorable traditional 'Irish' welcome. Guests are provided with a generous welcome hamper that includes breakfast supplies with an emphasis on local artisan suppliers.

Fordstown, Navan, Co. Meath  
Tel +353 (0) 46 943 4042 / 87 851 8553  
E [junehideawayatfoxhollow@gmail.com](mailto:junehideawayatfoxhollow@gmail.com)

### KILCLOON HOLIDAY HOMES AND PRIVATE GUIDED TOURS

Eight self-catering holiday homes with a Private National Tour Guide on site. Fully furnished with hotel quality bedlinens & towels provided. Complimentary Wi-Fi, communal BBQ area, giant size Chess Board and private parking. Stay & Tour with us, travel in style with packages tailored to suit all guests. [kilclooncottages.ie](http://kilclooncottages.ie)

Brownstown, Kilcloon, Co. Meath  
Tel +353 (0) 1 629 0803 / 87 683 9670  
E [kilclooncottages@gmail.com](mailto:kilclooncottages@gmail.com)

# OTHER ACCOMMODATION

## KILTALE HOLIDAY HOMES

Kiltale Holiday Homes offers a selection of Kiltale House, Cottage, Loft, Dairy, Stable & Lodge which are all 4 -star approved. They also have the Oak & Ash which are both 5-star approved. Total capacity 47 guests. Perfect for large groups. [meathselfcatering.com](http://meathselfcatering.com)

Kiltale, Dunsany, Co. Meath  
Tel +353 (0) 86 122 1589  
E [kiltaleholidayhomes@gmail.com](mailto:kiltaleholidayhomes@gmail.com)

## ORCHARD HOLIDAY VILLAGE

A new self-catering option located in the historic village of Slane. Originally the garden and orchard of the old Parochial House, the Orchard Holiday Village offers 3 three-bedroom townhouses and 1 two-bedroom townhouse, all fully-equipped for a practical and luxurious self-catering stay in the Boyne Valley. [orchardholidayvillage.ie](http://orchardholidayvillage.ie)

Orchard Way, Slane, Co. Meath, C15 P5FK  
Tel +353 (0) 41 988 4444  
E [info@orchardholidayvillage.ie](mailto:info@orchardholidayvillage.ie)

## STEEPLE VIEW HOLIDAY HOMES

Luxury 4 Star Fáilte Ireland approved 3 bedroom apartment, overlooking the Yellow Steeple, 3 mins walk to town centre and the castle. Walking distance to all locations in Trim, the perfect location to explore Dublin and the Boyne Valley.

Steeple View, High Street, Trim, Co. Meath  
Tel +353 (0) 87 913 5064  
E [trimaccommodation@gmail.com](mailto:trimaccommodation@gmail.com)



# STAY A WHILE

## EXTEND YOUR STAY IN THE BIRTHPLACE OF IRELAND'S ANCIENT EAST

The Boyne Valley is situated in the east of Ireland and only 20 minutes from Dublin city. It is the birthplace of Ireland's Ancient East and home to some world-renowned heritage sites including the UNESCO World Heritage Site at Brú na Bóinne (Newgrange and Knowth), the Hill of Tara and Ireland's largest Anglo-Norman castle at Trim - five millennia of archaeological wonders to explore, set in a sacred and mythical landscape.

There are also plenty of options for adventure, from high adrenalin activities and sports pursuits to gentle strolls, the Boyne Valley is brimming with stories, culture, attractions, festivals and fun.

With its own Blueway, and no less than three fantastic Greenways to visit, outdoor enthusiasts will be spoiled for choice and can paddle, pedal or walk to their heart's content. And don't forget your bucket and spade, the Boyne Valley coastline is a real hidden gem just waiting to be explored.

Discover the Flavours of the Boyne Valley - a celebrated and award-winning gastronomic region recognised globally for its exceptional food and drink. Beyond dining out, the Boyne Valley offers a host of unforgettable food experiences. Join a hands-on cookery class at Bread with Benefits or Lismullin Cookery School, explore the many vibrant farmers' markets that take place throughout the year such as Sheridan's Cheesemongers and The Cottage Market, Drogheda or take a scenic farm walk at Rock Farm Slane to connect with the people and places behind the food. From artisan producers to award-winning eateries, the Boyne Valley is your gateway to the best of Irish food culture. The Centre of Food Culture Ireland which is founded in the Boyne Valley is a social enterprise that believes that by preserving and celebrating our food culture, past, present and future, they will enhance people's relationship with food, connect them to the source of their food and the people who produce it.





Newgrange Passage Tomb



Hill of Tara



Kells

## HERITAGE ATTRACTIONS

### BRÚ NA BÓINNE

The World Heritage Site of Brú na Bóinne is Ireland's richest archaeological landscape and is situated within a bend in the River Boyne. Brú na Bóinne is famous for the spectacular prehistoric passage tombs of Knowth, Newgrange and Dowth which were built circa 3200 BC. These ceremonial structures are among the most important Neolithic sites in the world and contains the largest collection of megalithic art in Western Europe.

### HILL OF TARA

The Hill of Tara was the seat of the High Kings of Ireland and the most sacred site in ancient Ireland. It was used for millennia as a ritual assembly and burial site. Stunning views of the surrounding landscape. The Hill is accessible all year round with AV presentation and guided tours available from Visitor Centre during Summer months.

### KELLS

The town of Kells is home to many fine examples of early monastic remnants including its 9th and 10th century High Crosses, round tower and churches. An interactive exhibition and facsimile version of the Book of Kells is on display at the Kells Courthouse Tourism and Cultural Hub with free admission.

### MONASTERBOICE

At Monasterboice there are two of the finest High Crosses (Celtic Crosses) in Ireland – the South Cross (Cross of Muiredach) and the West Cross (Tall Cross) – both of which date from the 9th or 10th centuries. Today the image of the High Cross is recognised internationally as a symbol of Irish cultural heritage.

### OLDBRIDGE HOUSE — BATTLE OF THE BOYNE

An international battle fought on 1st July 1690 (old calendar) between King William III and his father in law King James II, brought to life using a laser battle site model, audio visual film, real and replica weaponry and interactive guided tours. The Visitor Centre is located in the restored 18th century Oldbridge House surrounded by Victorian gardens and battle site walks. Yearly events programme.

### OLD MELLIFONT ABBEY

Mellifont Abbey was one of the wealthiest and most influential monastic houses in medieval Ireland. It was founded by a community of Irish and French monks and was the first Cistercian Abbey in Ireland. Site open all year round. Visitor Centre open summer months.

### ST LAURENCE'S GATE

St. Laurence's Gate, which led to the Friary of St. Laurence in Drogheda, is widely regarded as one of the finest of its kind in Europe. It consists of two lofty circular towers, connected together by a wall, in which there is an archway, part of the wider walls of medieval Drogheda.

### TRIM CASTLE

Built by Hugh de Lacy in 1173 this is the largest Anglo-Norman castle in Ireland. In medieval times, the castle stood like an imposing stone sentinel and powerful symbol of Norman strength. In modern times, the castle remains a strong focal point in Trim town and has been used in the film Braveheart with Mel Gibson.



Battle of the Boyne



Old Mellifont Abbey



Trim Castle



Causey Farm

## ACTIVITIES

### CAUSEY FARM

Causey Farm in Fordstown, County Meath, is a gem of old fashioned Irish hospitality. The Murtagh family have been farming on Causey Farm for three generations and love to share their heritage, food, farm traditions and even sport with visitors. There are several events and activities to enjoy at Causey Farm including Dogitude, Causey August Weekend Adventure and Farmaphobia.



Emerald Park

### EMERALD PARK

As Ireland's premier operated theme park and zoo, with unlimited fun-filled attractions, there is something for everyone to enjoy at Emerald Park – 45 eye-popping rides, and a diverse zoo with unique experiences. Conquer the epic Cú Chulainn coaster, climb the Sky Walk, enjoy the award-winning World of Raptors display, and prove you are warrior worthy in the newly opened, Celtic themed, Tír na nÓg.

### GOLF

From the challenging parklands at Headfort, Royal Tara and Co. Meath Golf Club, to the historic links at Laytown & Bettystown, golfers of all ages and standards will find a course to suit their game. Add in the world famous links course at Baltray and Seapoint Golf Links together with more recent gems such as Killeen Castle, Knightsbrook, Julianstown and Bellewstown - and there is enough variety to whet any golfer's appetite to stay and play in the Boyne Valley.

### GREENWAYS

Discover some great tracks and trails, none more popular than our fantastic greenways and the majestic Boyne Blueway. The 30km Boyne Valley to Lakelands Greenway runs through the heart of County Meath to Kingscourt in County Cavan, while the enchanting Royal Canal Greenway is 130km of level towpath, ideal for walkers, runners and cyclists of all ages and stages. The Meath section spans 22km. Enjoy the peace and tranquility of the countryside as you ramble along this fantastic trail.



Royal Canal Greenway

### HORSE RACING

The Boyne Valley is famous for the wonderful horses it produces. The reason being, experience in horsemanship from breeding, breaking, livery and training. Where better to go racing than in the Boyne Valley. There is plenty of choice. National Hunt and Flat racing are regularly held at Fairyhouse (home of the Irish Grand National) and Bellewstown (for over 300yrs). Navan Racecourse is one of the finest possible tests for National Hunt horses, whilst Laytown Races is a unique event where the horses race on the beach.

### SLANE CASTLE DISTILLERY

Slane Irish Whiskey Distillery is available for private and group bookings. Enjoy a private or group guided tour and delve into their story to learn how the trailblazing Slane Irish Whiskey came to be. Savor the sights and aromas of their state-of-the-art working distillery. Finish with a guided tasting where you can sample their award-winning Slane Irish Whiskey blend.

### SPIRE OF LLOYD

This inland lighthouse, located just outside Kells, was designed by Henry Aaron Baker designer of the King's Inn, Dublin for Thomas Taylour, First Earl of Bective, in memory of his father (also Sir Thomas Taylor) in 1791 and provided work during the time of a local famine. It's open for visits every Friday between March and September, offering spectacular views of the surrounding countryside.

### WHITE RIVER KARTING

Try a Grand Prix with a full F1 style experience! Your group will have our whole circuit to themselves for your own exclusive race or time trials. For large groups, customised programmes are available. The circuit and facilities offer a unique venue for any event, and can host product launches, cycling training events, educational STEM programs, advanced motorcycle training, driving schools, car shows, track days, as well as the motorsport events WhiteRiver was created for!



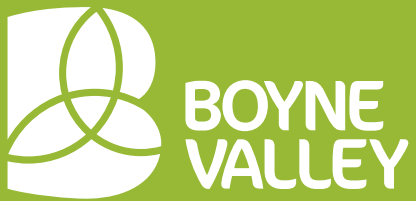
Killeen Castle Golf Course



Slane Castle Distillery



White River Karting



Birthplace of Ireland's Ancient East